



St Barnabas and St Philip's Newsletter

Spring 1—Week 2



Each week, children who display exemplary learning behaviours are chosen as our **stars of the week**.

This week our stars of the week are:

Reception— Theo

Year 1 - Shi-Shi

Year 2 - Henri

Year 3—Abtin

Year 4 - Iosu

Year 5- Hamza

Year 6 - Anna



Important Dates

23rd January— Reception and Year 1 Dental Screening

24th January—Year 5 Visit to Sikh Gurdwara

26th January—Year 2 visit to Kensington Central Library

29th January—KS2 Green Football Workshops

29th January—Y2 Money Sense Workshop

30th January—Y3 Money Sense Workshop

31st January— Reception Height and Weight Checks

SERVICE



Our value this term is **'Service**.

This week our value stars are:

Reception— Joaquin

Year 1 - Yusuf

Year 2 - Nai

Year 3—Bethel

Year 4 - Ranya

Year 5- Olivia

Year 6 - Mariam

ATTENDANCE MATTERS

every student, every day



This week our attendance statistics are:

Reception - 93%

Year 1 - 95.1%

Year 2 - 96%

Year 3 - 96.7%

Year 4 - 95.1%

Year 5- 95.9%

Year 6—92.9%

The winning class is:

Year 3





Our Value of the Term is:


SERVICE
HOME SCHOOL VALUES

This term we will be focussing in school on the value SERVICE.
We hope your family will find these ideas helpful as you explore the value and have fun together.

TALK TOGETHER about Service

Jesus was called the 'servant king'; his mission was to **serve** God and to **serve** all those people he met, through his teaching, his example and the way he led his life.

Who are the unsung heroes who **serve** us?

- at school
- at home
- in our clubs

How do you **serve** others?

- at school
- at home
- in your clubs

THINK TOGETHER Words of Wisdom

"There is more happiness
in giving than receiving"

*The words of Jesus recorded in
Acts 20:35 - The Good News Bible*



READ TOGETHER...

Queen Esther serves her people

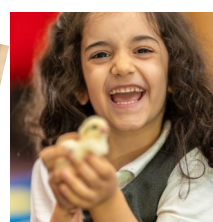
When King Xerxes, the ruler of the mighty land of Persia, was looking for a wife, Mordecai immediately thought of his cousin, the wise and beautiful Esther. Mordecai's family was Jewish, but he warned Esther not to tell anyone about this as he knew that there were powerful people in the land who hated Jews. Mordecai took Esther to the palace gates to be presented to the king, and, sure enough, as soon as King Xerxes saw Esther he fell in love with her, and the humble Jewish girl became a queen.

Mordecai often sat by the palace gates hoping to hear snippets of news about his cousin. For some time, all seemed well. But Haman, a wicked and powerful man in the court of King Xerxes, became angry with Mordecai because he would not bow down and honour him. Haman hatched a cunning plan. He began to tell the King bad things about the Jews living in his land and eventually he persuaded Xerxes that all the Jews should be killed. Queen Esther was beside herself with grief. She loved her people very much but felt powerless to help them.

King Xerxes noticed how terribly sad his queen had become, and begged her to tell him why she was so upset. Esther said she would explain if he and Haman would come to a feast that she prepared the following evening. When the grand banquet was over King Xerxes asked once again. "My dear Esther, you promised to tell me the reason for your sorrow." Esther summoned all her courage in what might be her last act of **service**. She told the King about Haman's plan to kill all of the Jews, which would include herself. King Xerxes was furious at the prospect of losing his beloved and beautiful Esther and ordered Haman to be arrested.

And so it was that Esther's name will be forever be remembered for her willingness to risk everything in the **service** of her people.

Bible story based on Book of Esther





Our Value of the Term is:



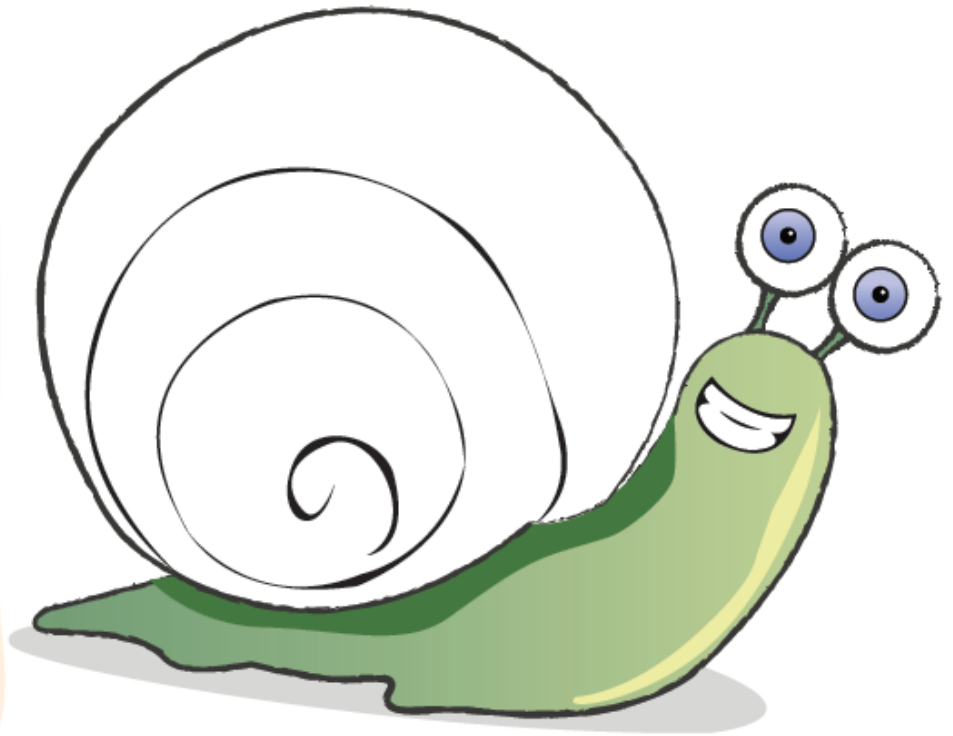
FAMILY FOCUS

Service with a smile

Complete a 'service snail'.

Living a life of **service** is about keeping your eyes open and looking out for ways to make others smile.

Draw a large smiley snail. Can you fill in the spirals on the snail's shell with ways in which as a family you serve each other in one week? When the snail shell is full take it to school to display in the Challenge Gallery.





Our Value of the Term is:



★ HALL OF FAME

JK Rowling OBE

Joanne K Rowling is best known for writing the series of fictional novels about Harry Potter, stories which captured the imagination of children across the world. She was awarded the OBE for her “**services** to children’s literature”.



JK Rowling wanted to use some of the money she had earned from her books to help orphaned children in Eastern Europe, she founded The Lumos Foundation and funded work to transform the lives of disadvantaged children living in huge, poorly funded orphanages. With her help beautiful, well equipped homes have been established, run by foster parents who love and care for young children.



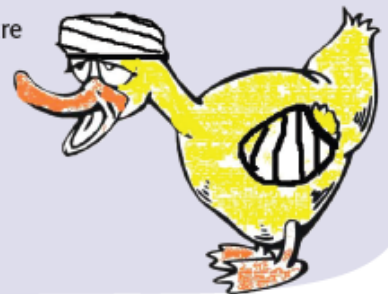
FASCINATING FACTS



OBE Award

The OBE, Officer of the Most Excellent Order of the British Empire, is an honour and medal awarded to people who have **served** their country or local community, often as volunteers.

- the first honours were awarded by George V in 1917 to people who had **served** their country in World War 1 but were not soldiers
- over 800 OBEs are now given each year
- OBEs are awarded for **service** such as:
 - o helping disabled children and their families
 - o working on nature conservation projects
 - o bringing relief to carers of very sick relatives
 - o protecting and caring for our country’s important buildings
 - o providing animal welfare





Gate Opening Change

Dear Families,

We have had some parental comments regarding the change from 8.30am to 8.40am. I apologise that the gate opening has caused inconvenience, unfortunately, I am bound by 'directed time' for staff, and this means that there is a limit to which I can direct their working time. The school requirements are that a school is open for 32.5 hours a week, and our school currently operates at 35 hours per week for KS2 and just under 34 hours for KS1, significantly over the recommended week set out by the DfE.

Due to us operating over the recommendations, the directed time is incredibly tight.

Previously, our staff were exceeding the limit of directed time, and by making this change I have been able to address this. Unfortunately, if I were to open the gate at 8.30am, I would have to close the school at 3.10pm/3.20pm, also affecting working parents.

I hope this helps you understand the change.

If you need any further clarification please speak with a member of the senior leadership team at the school gate.

Kind Regards,

Miss Timms





Upcoming Events—Reading, Maths and Science!

We are delighted that Spring Term brings with us some wonderful themed events.

We are looking forward to the following across this term:

Maths Week including Number Day— 29th January—2nd February

Science Week focusing on Women in Science— 5th February— 9th February

World Book Day—Thursday 7th March

For Maths week, we are looking to inspire our children and show them how numbers are used in a variety of careers. If your job involves numbers – for example working as: a cashier, a designer, a production manager, a chef – then we would love to hear from you!

For Science week, we are also looking to share with our children how science is used in a variety of careers. If your job has anything to do with science then we'd also love to hear from you.

If you have roles in either of these areas—please email the school office with your interest.

Then we will invite you to come in and visit your child's class during that week and share what you do.

For parents that shared last year, you are welcome to share again, but we'd ask that you share with an alternative class.

Full and further information about these themed events will be sent out separately.





Year 5 Parents—Secondary School Information

Please see information from Christ's Hospital Secondary School

Christ's Hospital is unlike any other independent school in the UK; our pupils come from every possible background, this results in a social and cultural diversity that enriches our school community and offers our pupils unique opportunities as we prepare them to take their place in the modern world.

Means-tested bursaries are granted to 650 of our 900 pupils, which means they receive

a **free or low-cost place**.

Christ's Hospital was established over 470 years ago as a charitable boarding school and is proud to maintain its founding principles and ethos. It offers a boarding education of the strongest quality to children with academic potential, from **all backgrounds**, in a caring and supportive environment.

We are ready and eagerly awaiting to answer any questions you, your staff and or/families may have hello@christs-hospital.org.uk





Notice from RBKC

Fostering can be a rewarding and a life-changing experience for you and the child you are helping. Becoming a foster carer is easier than you think. We desperately need more foster carers in Hammersmith & Fulham, Kensington and Chelsea and Westminster as we have many children in need of short-term or long-term care.

You will earn a competitive fee and you will be rewarded with training, and one to one support and mentoring every step of the way.

For more information, please visit www.fosteringsharedservices.org.uk or contact the Fostering Team on 0208 753 1057 or fostering@rbkc.gov.uk

FOSTERING
CHANGE A LIFE. FOSTER A CHILD

Ever thought about becoming a foster carer?

Join one of our Q&A sessions to hear what it's all about.
Everyone is welcome.
No question is too small.

020 8753 1057 | fostering@rbkc.gov.uk | [foster4West](https://www.facebook.com/foster4West)

For more information visit www.rbkc.gov.uk/fostering

City of Westminster | Kensington & Chelsea





Donations and School Support

We are incredibly thankful to all the parents/carers who regularly donate to our school community - whether it be through time, bringing in used uniform or books, or through monetary donations.

We would like to bring to your attention several other ways in which you can donate to the school if you are able to:

Amazon Wish List : <https://amzn.eu/gs8jKyz>

Easy Fundraising: <https://www.easyfundraising.org.uk/causes/sbsp/?searchSessionId=ffb5681c-3de9-4b02-813e-cd0fc9f3548b>

PSFA General Donation: <https://www.pta-events.co.uk/sbsp-psfa/#.Yx8urnbMKUk>





Governors Fund 23-24

As you may be aware, we are a voluntary aided Church of England Primary School with approximately 210 pupils. We are devoted to providing our pupils with the best possible learning environment based on decent morals and values, and we are proud to have served our community for over a century.

As a Church of England School, we are required to contribute an annual maintenance fee to the London Diocese Board for School. This fee allows the school to effectively benefit from the LDBS maintenance scheme that provides 90% of the overall cost for approved capital projects including redevelopment of the existing facilities and major refurbishments.

Over the years, our pupils have benefitted from a range of capital projects, including, a new bridge linking two blocks, a fully equipped school kitchen, music room, Computing suite, library, refurbished classrooms, new toilets, a new roof and skylights.

I am sure you will appreciate, it is vital for our pupil's education, that we provide them with the best facilities possible. This can only be achieved through the kind generosity of parents, and though the fee per pupil is voluntary, we ask all parents to contribute £45 per pupil per academic year or such amount, as they are able, in order that our pupils continue to benefit from the LDBS maintenance scheme.

Unfortunately, any shortfall in the overall Governors maintenance fund will have to be taken from the school delegated budget that in turn will mean funds being diverted from other areas of the curriculum.

Contributions can be made via the School Gateway : <https://login.schoolgateway.com/0/auth/login>.

or directly to the Governors fund account:
METRO BANK. Sort code: 23-05-80
Account number: 18996065

We appreciate any contributions to this fund.

Address:

St Barnabas and St Philip's
Church of England Primary
School
Pembroke Mews
58 Earls Court Road
Kensington
London
W8 6EJ

Tel: [0207 937 9599](tel:02079379599)

Email: admin@sbsp.rbkc.sch.uk

Term Dates

Please see the [Term Date Section](#) on our School Website for the full details of term dates.

Please note that any holidays in term time cannot be authorised.

