



# St Barnabas and St Philip's Newsletter

Spring 1—Week 1



Each week, children who display exemplary learning behaviours are chosen as our **stars of the week**.

This week our stars of the week are:

- Reception** - Zain
- Year 1** - Ana
- Year 2** - Bella Blue
- Year 3** - Ali
- Year 4** - Sloane
- Year 5** - Abbas
- Year 6** - Simona

SERVICE



Our value this term is **'Service**.

This week our value stars are:

- Reception** - Elona
- Year 1** - Esme
- Year 2** - Joey
- Year 3** - Maryam
- Year 4** - Mia
- Year 5** - Datis
- Year 6** - Shaista

ATTENDANCE MATTERS  
every student, every day



This week our attendance statistics are:

- Reception** - 90%
- Year 1** - 93.4%
- Year 2** - 95%
- Year 3** - 95.4%
- Year 4** - 96%
- Year 5** - 95.3%
- Year 6**—91%

The winning class is:

**Year 4**



## Important Dates

**15th January**—  
Spring Term  
Clubs Begin

**17th January**—Year  
5 STEM Chal-  
lenge

**18th January**—Year  
6 Visit to Bud-  
dhist Centre

**19th January**—Year  
1 visit to Ken-  
sington Central  
Library

**23rd January**—  
Reception and  
Year 1 Dental  
Screening

**24th January**—Year  
5 Visit to Sikh  
Gurdwara

**26th January**—Year  
2 visit to Ken-  
sington Central  
Library





## Welcome Back from Miss Timms

It is with great enthusiasm and anticipation that I welcome each and every one of you back to school.

As we dive into the Spring Term, I am thrilled to announce a host of engaging events and activities that will enrich our students' learning experiences. One highlight is the commencement of our Spring Term Enrichment Clubs on January 15th. These clubs provide our students with wonderful opportunities to explore new interests and develop talents.

In addition to the Enrichment Clubs, our youngest learners in Reception, Year 1, and Year 2 have a special treat in store. We have organised visits to Kensington Library, where they will have the chance to immerse themselves in the magical world of literature and foster a love for reading.

An exciting and educational journey awaits us in the realm of RE (Religious Education) during Spring 1. We will be delving into the study of world faiths, with each year group

having the unique opportunity to visit places of worship. Our students will explore the rich tapestry of beliefs by visiting a Gurdwara, Synagogue, Church, Mosque, or Temple, broadening their understanding and fostering a sense of respect and unity.

I am genuinely excited about the term ahead and the endless possibilities it brings for growth and achievement. As always, the success of our school relies on the partnership between home and school, and I am looking forward to working closely with you, our valued parents and guardians, to make this term truly exceptional.

Let's embrace the challenges, celebrate the victories, and create lasting memories together.

Thank you for your ongoing support and dedication to St. Barnabas and St. Philip's School.





## Our Value of the Term is:

# SERVICE

HOME SCHOOL VALUES

This term we will be focussing in school on the value SERVICE.

We hope your family will find these ideas helpful as you explore the value and have fun together.

### TALK TOGETHER about Service

Jesus was called the 'servant king'; his mission was to **serve** God and to **serve** all those people he met, through his teaching, his example and the way he led his life.

Who are the unsung heroes who **serve** us?

- at school
- at home
- in our clubs

How do you **serve** others?

- at school
- at home
- in your clubs



### READ TOGETHER...

#### Queen Esther serves her people

When King Xerxes, the ruler of the mighty land of Persia, was looking for a wife, Mordecai immediately thought of his cousin, the wise and beautiful Esther. Mordecai's family was Jewish, but he warned Esther not to tell anyone about this as he knew that there were powerful people in the land who hated Jews. Mordecai took Esther to the palace gates to be presented to the king, and, sure enough, as soon as King Xerxes saw Esther he fell in love with her, and the humble Jewish girl became a queen.

Mordecai often sat by the palace gates hoping to hear snippets of news about his cousin. For some time, all seemed well. But Haman, a wicked and powerful man in the court of King Xerxes, became angry with Mordecai because he would not bow down and honour him. Haman hatched a cunning plan. He began to tell the King bad things about the Jews living in his land and eventually he persuaded Xerxes that all the Jews should be killed. Queen Esther was beside herself with grief. She loved her people very much but felt powerless to help them.

King Xerxes noticed how terribly sad his queen had become, and begged her to tell him why she was so upset. Esther said she would explain if he and Haman would come to a feast that she prepared the following evening. When the grand banquet was over King Xerxes asked once again. "My dear Esther, you promised to tell me the reason for your sorrow." Esther summoned all her courage in what might be her last act of **service**. She told the King about Haman's plan to kill all of the Jews, which would include herself. King Xerxes was furious at the prospect of losing his beloved and beautiful Esther and ordered Haman to be arrested.

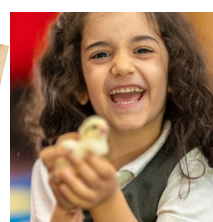
And so it was that Esther's name will be forever be remembered for her willingness to risk everything in the **service** of her people.

### THINK TOGETHER Words of Wisdom

"There is more happiness  
in giving than receiving"

*The words of Jesus recorded in  
Acts 20.35 - The Good News Bible*

*Bible story based on Book of Esther*





## Our Value of the Term is:



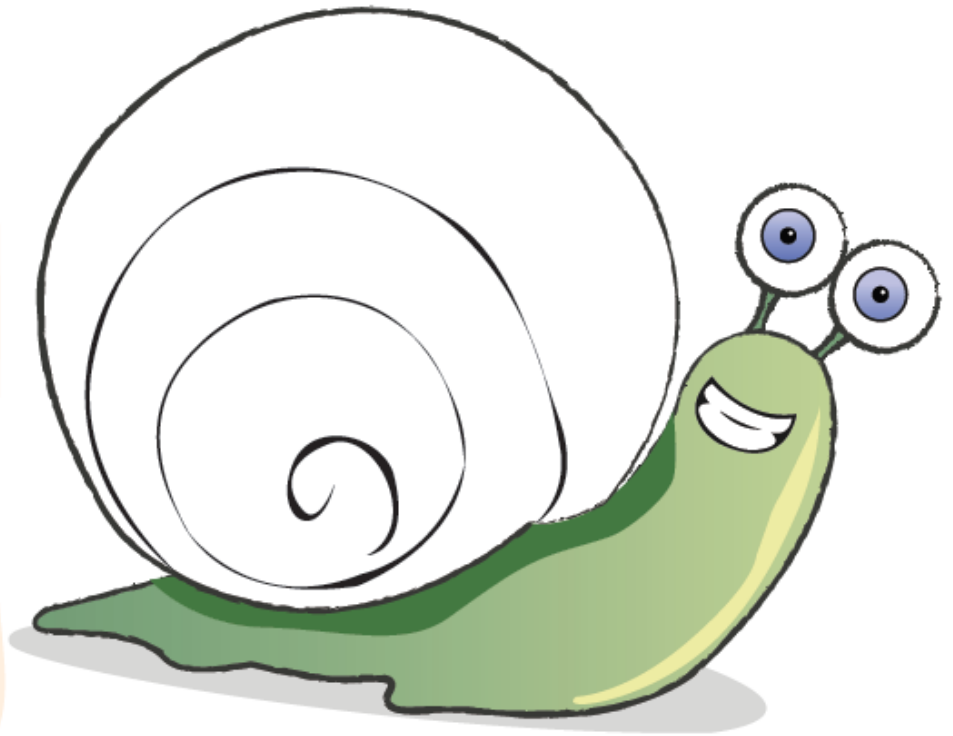
### FAMILY FOCUS

#### Service with a smile

Complete a 'service snail'.

Living a life of **service** is about keeping your eyes open and looking out for ways to make others smile.

Draw a large smiley snail. Can you fill in the spirals on the snail's shell with ways in which as a family you serve each other in one week? When the snail shell is full take it to school to display in the Challenge Gallery.





## Our Value of the Term is:



### ★ HALL OF FAME

#### JK Rowling OBE

Joanne K Rowling is best known for writing the series of fictional novels about Harry Potter, stories which captured the imagination of children across the world. She was awarded the OBE for her “**services** to children’s literature”.



JK Rowling wanted to use some of the money she had earned from her books to help orphaned children in Eastern Europe, she founded The Lumos Foundation and funded work to transform the lives of disadvantaged children living in huge, poorly funded orphanages. With her help beautiful, well equipped homes have been established, run by foster parents who love and care for young children.



#### FASCINATING FACTS



#### OBE Award

The OBE, Officer of the Most Excellent Order of the British Empire, is an honour and medal awarded to people who have **served** their country or local community, often as volunteers.

- the first honours were awarded by George V in 1917 to people who had **served** their country in World War 1 but were not soldiers
- over 800 OBEs are now given each year
- OBEs are awarded for **service** such as:
  - o helping disabled children and their families
  - o working on nature conservation projects
  - o bringing relief to carers of very sick relatives
  - o protecting and caring for our country’s important buildings
  - o providing animal welfare





## Upcoming Events—Reading, Maths and Science!

We are delighted that Spring Term brings with us some wonderful themed events.

We are looking forward to the following across this term:

**Maths Week** including Number Day— 29th January—2nd February

**Science Week** focusing on Women in Science— 5th February— 9th February

**World Book Day**—Thursday 7th March

**For Maths week**, we are looking to inspire our children and show them how numbers are used in a variety of careers. If your job involves numbers – for example working as: a cashier, a designer, a production manager, a chef – then we would love to hear from you!

**For Science week**, we are also looking to share with our children how science is used in a variety of careers. If your job has anything to do with science then we'd also love to hear from you.

**If you have roles in either of these areas—please email the school office with your interest.**

Then we will invite you to come in and visit your child's class during that week and share what you do.

For parents that shared last year, you are welcome to share again, but we'd ask that you share with an alternative class.

Full and further information about these themed events will be sent out separately.





## Spring Term Clubs

Our Spring Term Club Offer is here!

All clubs:

**Starting** week commencing 15th January 2024

**Please note there will be no clubs week commencing the 12<sup>th</sup> February for half term**

**Ending** week commencing 18th March 2024 bringing the total to 9 sessions for the term.

Clubs will be available to book from Monday 18<sup>th</sup> December until Friday 12<sup>th</sup> January.

If you have any questions, please speak to a member of the Leadership team on the school gate.

### Note:

**This term we are changing the way we dismiss school clubs.**

Clubs will be dismissed, as the end of the school day is, by parents coming into the playground to collect their children. The gate will be opened at 4.30pm and shut at 4.40pm.

After 4.40pm children that are late to be collected will be placed in the after school centre, and a charge will be placed on your gateway account.





## Reception Place Admissions

A reminder that if you have a child who would like to join us in 2024-25 that the deadline to apply is **Monday 15th January 2024**.

Applications should be made here:

<https://www.rbkc.gov.uk/children-and-education/school-admissions/starting-primary-school>

If you need a paper application form or further guidance, contact the Admissions Team on:

- 020 7745 6432 / 6433 (9am to 2pm Monday to Fridays)
- [school.admissions@rbkc.gov.uk](mailto:school.admissions@rbkc.gov.uk)

## Spring Term PE Days

For the Spring Term, beginning 8<sup>th</sup> January, class PE days are as follows:

**Reception**—Thursday

**Year 1**—Tuesday

**Year 2**—Tuesday and Friday

**Year 3** -Tuesday and Friday

**Year 4** -Tuesday and Friday

**Year 5**—PE and Swimming on Tuesday

**Year 6**—Tuesday and Friday

Reception and Year 1 children do 10 minutes daily exercise in addition to their Tuesday PE lesson.

Children should wear their PE kit to school on PE days .







## Donations and School Support

We are incredibly thankful to all the parents/carers who regularly donate to our school community - whether it be through time, bringing in used uniform or books, or through monetary donations.

We would like to bring to your attention several other ways in which you can donate to the school if you are able to:

**Amazon Wish List :** <https://amzn.eu/gs8jKyz>

**Easy Fundraising:** <https://www.easyfundraising.org.uk/causes/sbsp/?searchSessionId=fbb5681c-3de9-4b02-813e-cd0fc9f3548b>

**PSFA General Donation:** <https://www.pta-events.co.uk/sbsp-psfa/#.Yx8urnbMKUk>





## Governors Fund 23-24

As you may be aware, we are a voluntary aided Church of England Primary School with approximately 210 pupils. We are devoted to providing our pupils with the best possible learning environment based on decent morals and values, and we are proud to have served our community for over a century.

As a Church of England School, we are required to contribute an annual maintenance fee to the London Diocese Board for School. This fee allows the school to effectively benefit from the LDBS maintenance scheme that provides 90% of the overall cost for approved capital projects including redevelopment of the existing facilities and major refurbishments.

Over the years, our pupils have benefitted from a range of capital projects, including, a new bridge linking two blocks, a fully equipped school kitchen, music room, Computing suite, library, refurbished classrooms, new toilets, a new roof and skylights.

I am sure you will appreciate, it is vital for our pupil's education, that we provide them with the best facilities possible. This can only be achieved through the kind generosity of parents, and though the fee per pupil is voluntary, we ask all parents to contribute £45 per pupil per academic year or such amount, as they are able, in order that our pupils continue to benefit from the LDBS maintenance scheme.

Unfortunately, any shortfall in the overall Governors maintenance fund will have to be taken from the school delegated budget that in turn will mean funds being diverted from other areas of the curriculum.

Contributions can be made via the School Gateway : <https://login.schoolgateway.com/0/auth/login>.

or directly to the Governors fund account:  
METRO BANK. Sort code: 23-05-80  
Account number: 18996065

We appreciate any contributions to this fund.

### Address:

St Barnabas and St Philip's  
Church of England Primary  
School  
Pembroke Mews  
58 Earls Court Road  
Kensington  
London  
W8 6EJ

Tel: [0207 937 9599](tel:02079379599)

Email: [admin@sbsp.rbkc.sch.uk](mailto:admin@sbsp.rbkc.sch.uk)

## Term Dates

Please see the [Term Date Section](#) on our School Website for the full details of term dates.

Please note that any holidays in term time cannot be authorised.

